



## District 5 Code Analysis - 01/09/2023

Data extracted for Code complaint cases opened between October 1st, 2021 - September 30st, 2022

### All Complaint Cases

Reported Complaint Type	Total	Commercial	Neighborhood	Multifamily
Land Use	494	41	425	28
Property Abatement	1,422	166	1,132	124
Structure Condition	351	55	205	91
Work Without Permit	99	10	82	7
SWS Chp 15	-	-	-	-
<b>Total</b>	<b>2,366</b>	<b>272</b>	<b>1,844</b>	<b>250</b>
<b>Total Percent of Citywide Complaints</b>	<b>8.3%</b>	<b>6.6%</b>	<b>9.9%</b>	<b>4.4%</b>

### Repeat Offender, Short Term Rental, and Rooming and Boarding Home Complaint Cases

*\*Filtering complaint cases by complaints occurring at Repeat Offender Properties (ROP), Short Term Rentals (STR), or Rooming and Boarding Homes (RBH). Austin Code categorizes them as Operating Licenses types.*

Case Code	Total	Commercial	Neighborhood	Multifamily
Repeat Offender Properties	19	3	3	13
Short Term Rentals	146	2	134	10
Rooming and Boarding Homes	1	-	1	-
<b>Total</b>	<b>166</b>	<b>5</b>	<b>138</b>	<b>23</b>
<b>Total Percent of Citywide Complaints</b>	<b>0.6%</b>	<b>0.1%</b>	<b>0.7%</b>	<b>0.4%</b>

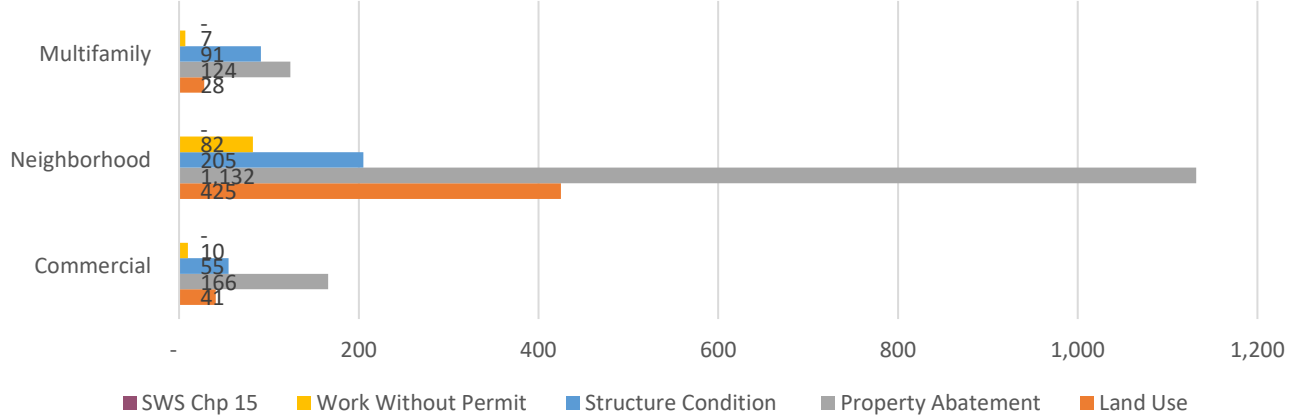
Reported Complaint Type	Total	ROP	STR	RBH
Land Use	494	3	144	1
Property Abatement	1,422	-	-	-
Structure Condition	351	16	1	-
Work Without Permit	99	-	1	-
SWS Chp 15	-	-	-	-
<b>Total</b>	<b>2,366</b>	<b>19</b>	<b>146</b>	<b>1</b>
<b>Total Percent of Citywide Complaints</b>	<b>8.3%</b>	<b>0.9%</b>	<b>8.3%</b>	<b>2.7%</b>

### Council District Matrix - All Complaint Cases

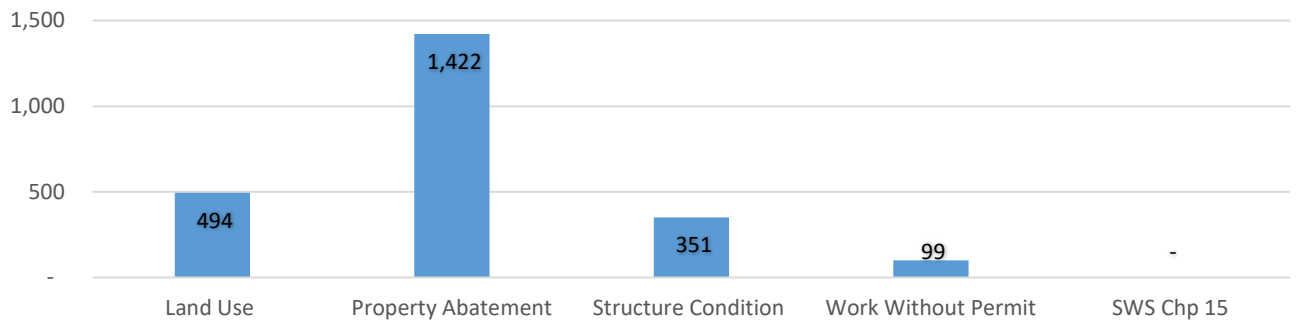
*This matrix shows your Council District's percentage of total complaint cases in comparison with others.*

Council District	% Total	% Commercial	% Neighborhood	% Multifamily
District 1	16.5%	13.3%	17.8%	14.3%
District 2	8.5%	7.9%	9.5%	5.8%
District 3	14.7%	18.5%	13.4%	16.3%
District 4	17.4%	19.5%	14.9%	24.0%
District 5	8.3%	6.6%	9.9%	4.4%
District 6	4.4%	3.6%	5.2%	2.5%
District 7	7.2%	6.6%	7.7%	5.9%
District 8	3.4%	1.9%	4.2%	1.7%
District 9	12.9%	18.1%	9.3%	21.1%
District 10	6.6%	3.9%	8.0%	4.0%

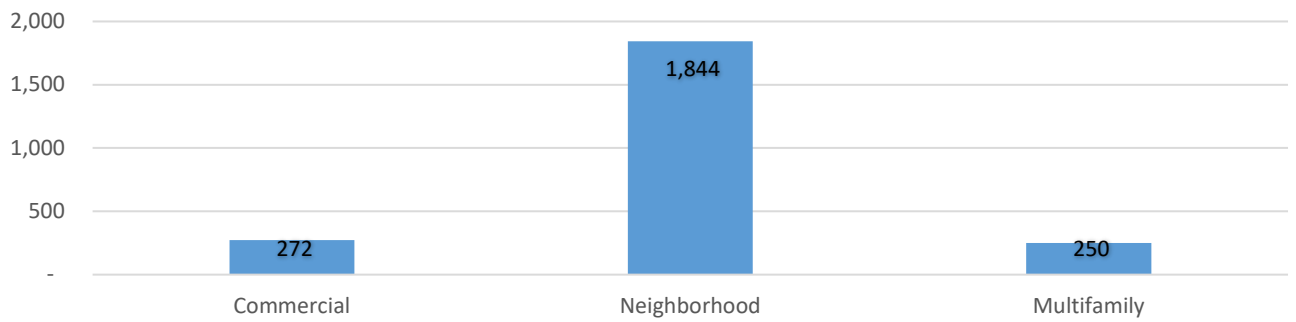
### Complaint Case Types by Zoning Designation



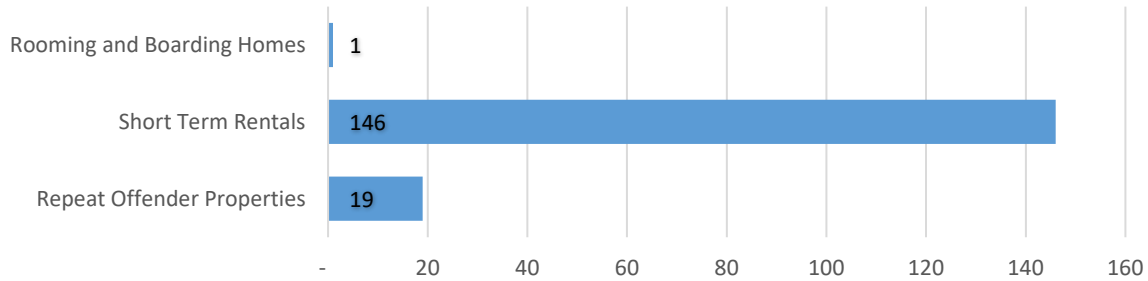
### Complaint Cases by Complaint Type



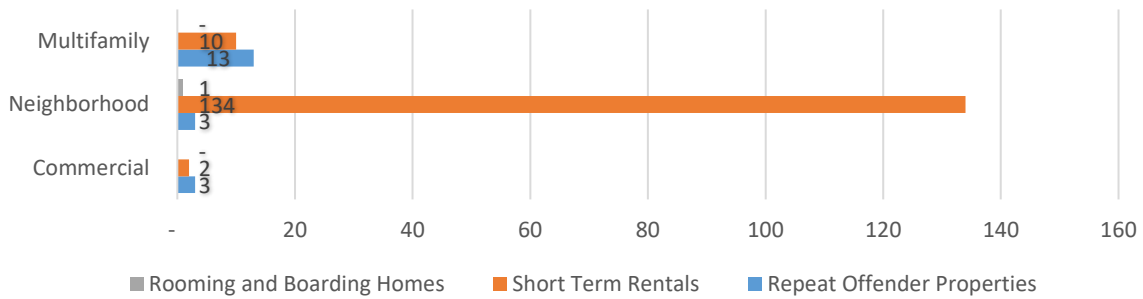
### Complaint Cases by Zoning Designation



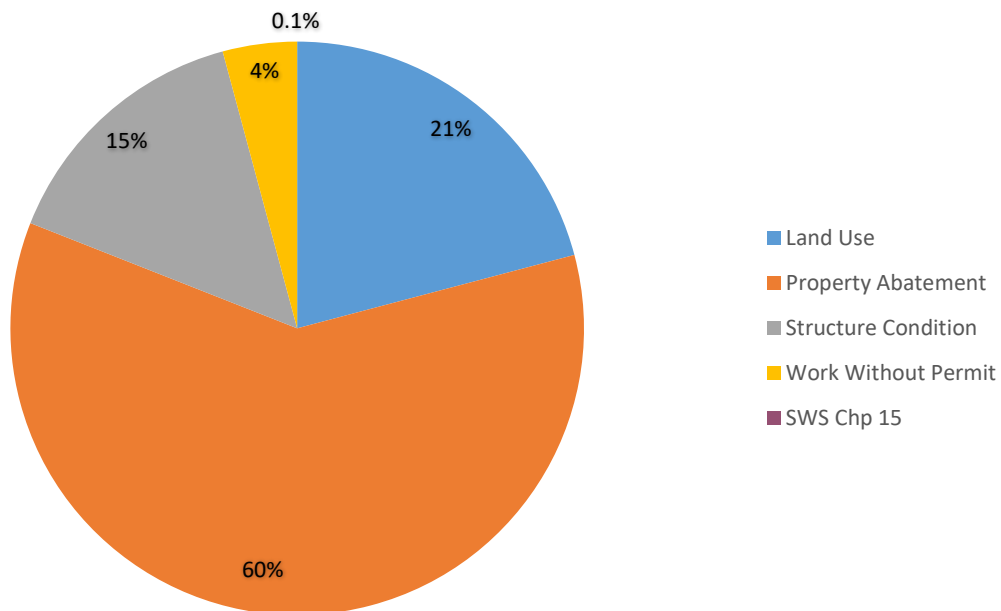
### Complaint Cases by Operating License Types



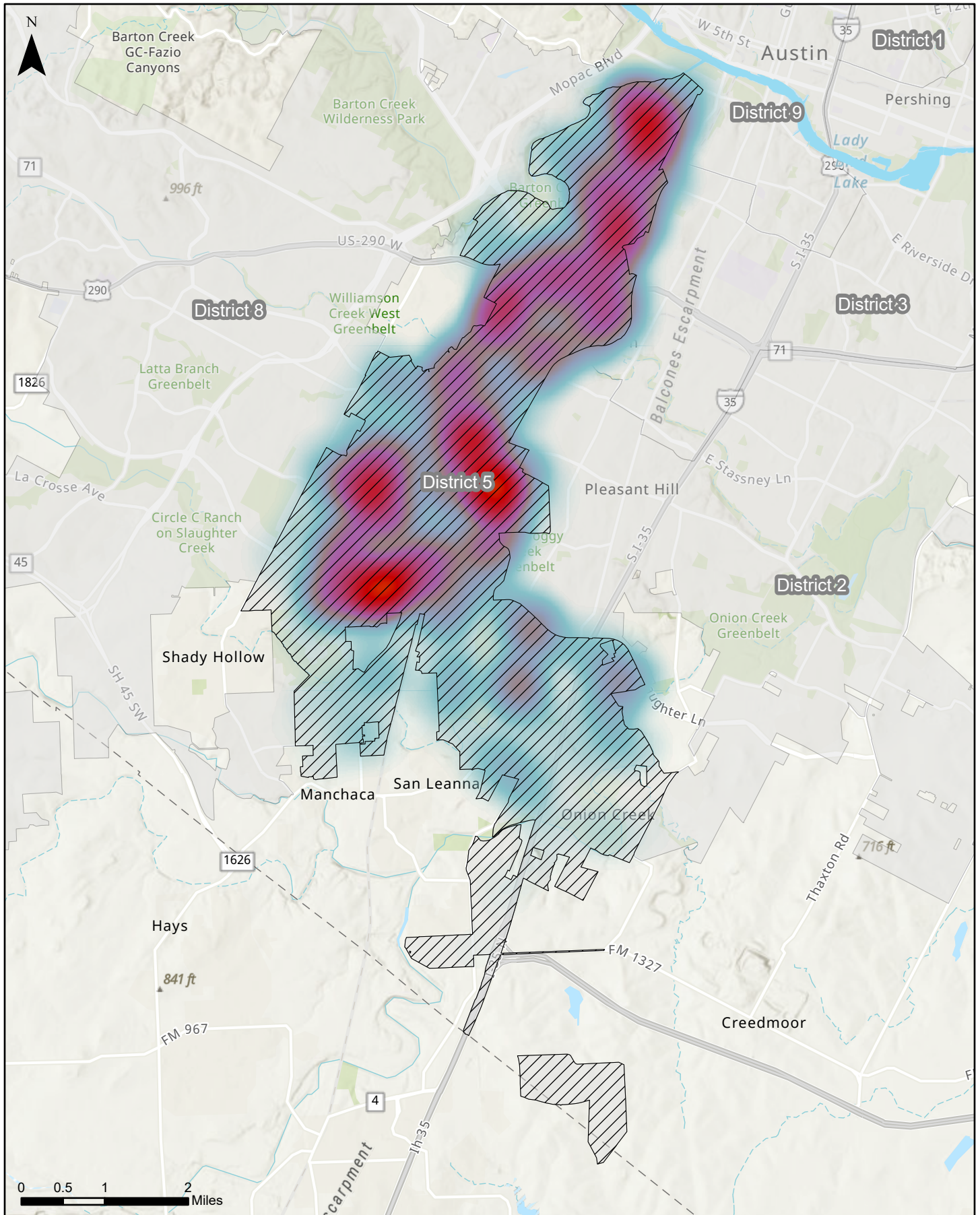
### Operating License Complaint Cases by Zoning Designation



### Operating License Complaint Case Types



# Council District 5



This map examines the density of STR-related code cases opened in Council District 5 between October 1, 2021 and September 30, 2022. The total number of cases opened was 2366

Sources: AMANDA Case Management Database; GIS DM 2021

 District Boundary  
 Sparse  
 Dense

**AUSTINCODE**  
**DEPARTMENT**  
 Map generated on:  
 1/9/2023